

THE WORLD'S BEST-SELLING HOMES MAGAZINE

ELLE DECORATION

FEBRUARY 2015

PHILIPPINES

A NEW VIEW

BOLD HOMES, BRIGHT LIVING

BRILLIANT BUYS

*OUR ROUNDUP OF THE BEST
PLACES TO SHOP FOR YOUR HOME*

GREAT RESTORATION

*FROM TIMEWORN PROPERTY
TO COOL BOUTIQUE HOTEL*



SUMMIT
MEDIA

ART CHATS: CHARLES LAHTI, TRICKIE LOPA, JAKE VERZOSA
• MUST-SEE EXHIBITS • NEW ZEALAND'S CHARMS

Study The wooden flooring with the herringbone pattern is original to the villa, circa 1930. Painted in homeowner Stefano Vitali's favorite color, the study has direct access to the master bedroom through the framed passage on the left. The drop-leaf table is a Saporiti 1970 design. (Facing page) The 1960s gold armchair is by Giovanni Corradini and the "Grasshopper" lamp is by Greta Groeseman. The painting behind them is Roberto Tivitavi Papini's "Horizontal Vertical." ▶



Home and homage

The elegant voids of a villa provide the perfect stage where iconic period pieces are displayed to dazzling effect.

*Story by CHIARA DAL CANTO Photography by FABRIZIO CICONI/LIVING INSIDE
Additional text and interview by LEAH NEMIL-SAN JOSE*



Homeowner (right) Stefano Vitale with son Niccolò.
Garden (left and below) Stefano says that the large garden was one of the reasons he and his family bought the villa. It is the venue for ping pong matches, dinner parties, and even exhibits.
Balcony (facing page) The left side of the anteroom opens to the balcony where one meets the gaze of a bust in terra cotta and gets a view of the garden. ▶



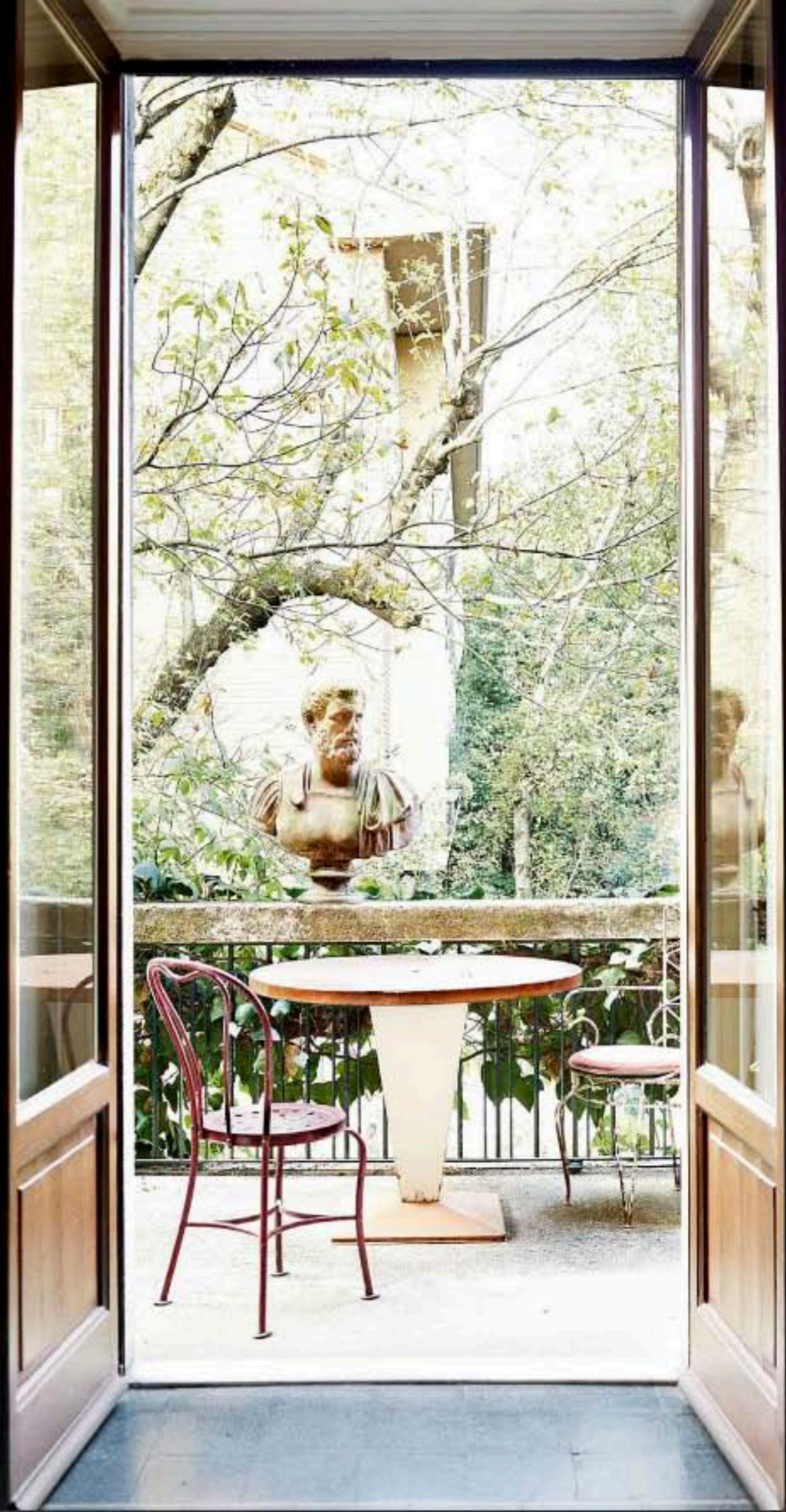
Many of the pieces are from his gallery, *Avanguardia Antiquaria*, where one can also find designs by Osvaldo Borsani, Vico Magistretti, and Gio Ponti. Stefano counts Ponti as one of the most influential designers in his life. One of the few changes he made in the villa's structure is a small wall opening in his study. This allows him to see the Pirelli building, one of the tallest skyscrapers in Milan designed by a group of architects spearheaded by Ponti in 1956.

Indeed, Stefano's choices reveal an acute eye for contemporary art and design. But he also displays a playful imagination as shown in the hidden passage he created from the bedroom to the study. At first glance, there appears to be no entry door, that is, until one opens the wardrobe's glass panel by the window and arrives at the study upon entering the closet. "I think that illusion is part of our life," Stefano explains. "I thought it was a good idea to underline this feeling and play with reflections and spaces." avanguardiaantiquaria.com

He may have a passion for the 1930s design aesthetic, but antiquarian art dealer Stefano Vitale's choice of a home—a villa built in the same period—was made primarily for sentimental reasons. The former owners were very good friends of Stefano's family, and he remembers with fondness how he used to play games there as a child. When it came up for sale, he and his two siblings took the opportunity to make it their family home. Stefano's brother and his 10-year-old son live on the ground floor, their sister on the third. On the floor between them live Stefano and his son Niccolò.

Color leads to Stefano's apartment. Deep blue signals his anteroom, and it continues to a small bathroom. White envelopes the walls of the living room and bedroom. Yellow warms the dining room. But red is the dominant shade of the house, serving as the background of his study and appearing here and there around the house. "It's my favorite—I just love it," Stefano says of the commanding color. "It's something that reminds me of the heart, feelings, and at the same time, the sun."

The hallmark of the house, however, is its homage to 20th-century design, particularly from the Art Deco period and the French modernist era of the '50s. Stefano, who specializes in the restoration of 18th- and 19th-century furniture, says, "I love the period's classic and symmetrical styles that are very modern at the same time."





Anteroom Deep blue walls and a chair by French modernist André Soenay greet visitors upon entering Stefano's apartment. (Below) The blue color scheme extends to this small bathroom with the elegant vintage pendant light. **Dining room** (facing page) Warm browns take the stage here, from the ceiling down to the Art Deco-style side chair to the geometric flooring. ▶



"MY SON AND I LOVE THE VILLA'S WINDOWS BECAUSE OF THE BRIGHTNESS OF THE LIGHT."



ON THE RED PAPER HOUSE OF MARCELLO CHIARENZA: "I LIKE THE SIMPLE FORMS AND LIGHTNESS OF HIS WORK, ITS SUGGESTIVE POWER OF POETRY."

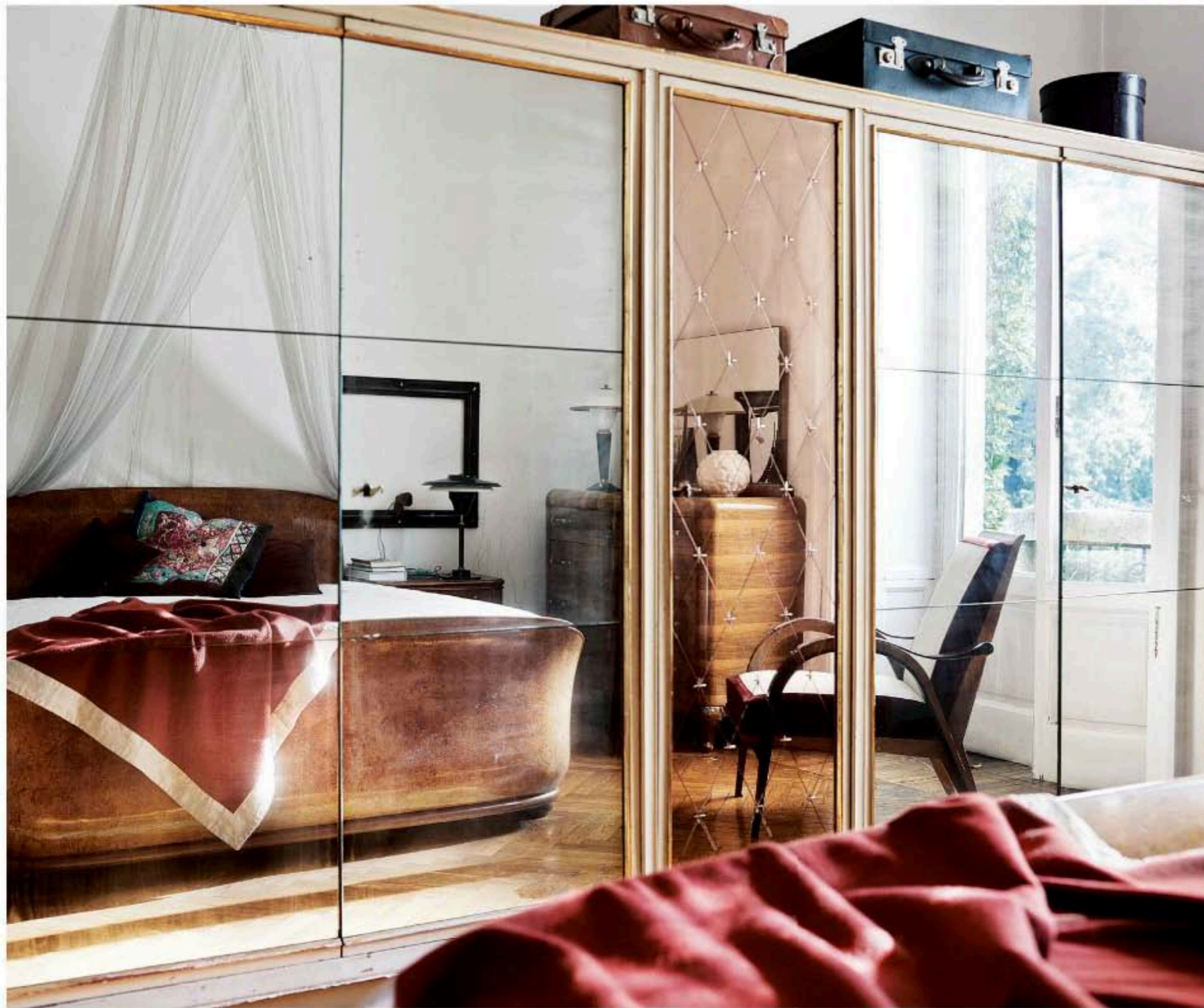
Living room The loose seating arrangement makes this room flexible, even acting as a holding space for Avanguardia Antiquaria pieces such as the red French Art Deco chair by Giovanni Cerri until they go on display at the gallery. (Inset) Ten years ago, Stefano bought this paper sculpture called "Venice" by Marcello Chiarenza. Since then he and the artist have collaborated on many projects in Italy and around the world. ►

"I LOVE TO PLAY
WITH ILLUSIONS,
REFLECTIONS,
AND SPACES."



Passage (above) A classic door casing of frames the hidden passage from the study to the bedroom. (Left) A Fausto Rossi artwork. (Facing page) The entry door from the bedroom is almost unseen because it has been designed as part of the wardrobe door panels. ▶





"I LOVE 20TH-CENTURY PIECES; THE ONES IN MY HOME REMIND ME OF BALANCED PROPORTIONS AND IMPORTANT MOMENTS IN MY LIFE."

Bedroom Italian furniture maker Valzania made the 1930s bed in parchment. The closet's glass paneled doors cleverly hides the entrance to the study. ■